

COMMERCIAL FOUR LAMP

Premium Strip Fixture

FEATURES

Flip-up socket bars.

Continuous raceway and row mounting capability.

Surface, stem, or chain mountable.

Uses T8 or T12 lamps.

Available in 1, 2, 3 or 6 lamp configuration.

Steel housing and ends with white enamel finish.

Available in aluminum, for salty or corrosive environments.



APPLICATIONS

Retail Stores

Manufacturing Areas

Warehouse Areas

Warehouse Aisles

Utility Area

Large Storage Rooms

APPLICATION FEATURES

Mid-grade, fluorescent strip fixture. For use in indoor applications where low cost, but industrial grade ruggedness is required. Socket bar flips up for easy installation. Available in lengths from 24 to 96 inches. Converts to raceway for continuous row mounting.

CONSTRUCTION

Die and brake formed, code gauge pre-painted white cold rolled steel. Screw fastened end plates can be repositioned to serve as joiners for continuous row mounting, thus forming a continuous, uninterrupted wireway (on non-welded units only). Single wireway cover on non-tandem units. Knockouts are provided for flexible conduit attachment.

MOUNTING

Knock-outs are provided for stem mounting. Mounting holes are provided. Provision for chain mounting included.

FINISH

Pre-painted high reflectance white.

ELECTRICAL

All electrical components are UL listed or CSA approved. Lamp holders provided ensure positive lamp retention. Lamp holders with rotary locks are available. Sufficient knockouts are provided on the back and ends for connections and through wiring.

APPROVALS

Approved to CSA and UL standards. (UL, or equivalent, marked only when specified.)

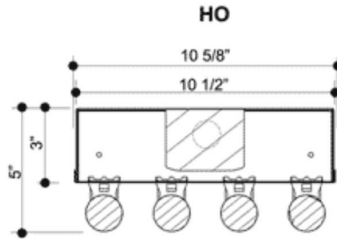
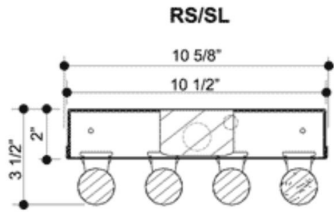
OPTIONS

- 20 gauge riveted construction.
- 20 gauge welded construction.
- Dimmable ballasts, see product selection.
- Polycarbonate rotary lock lampholders.
- Individual & custom packaging (select models only).

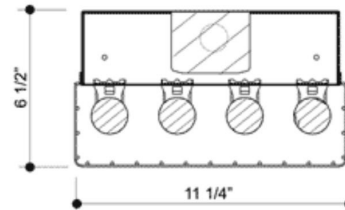
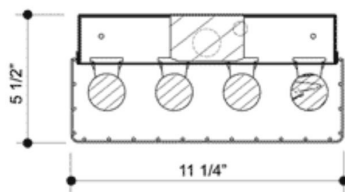
OPTIONAL ADDERS

- Pull chain switch
- Fuse holder.
- Turn switch
- Toggle switch.
- Heavy duty wire guards powder coated white finish, comes with mounting hardware.

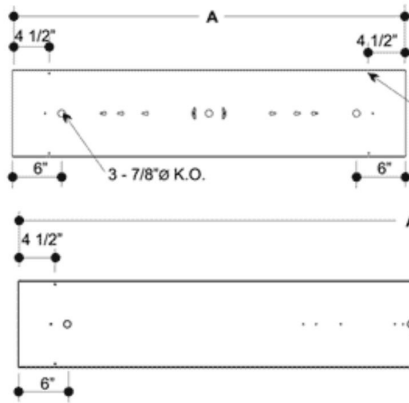
PRODUCT DIMENSIONS



With Wireguards

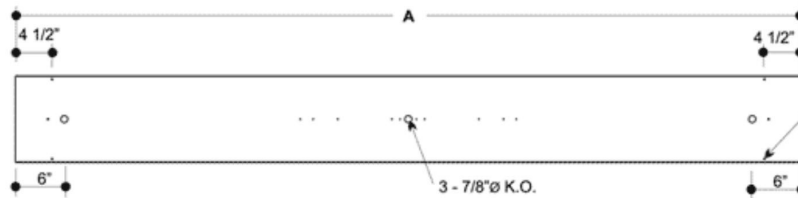


MODEL		LENGTH A (in.)
324	424	24
336	436	36
336/2	436/2	72
348	448	48
348/2	448/2	96
---	448/436	84
372	472	72
396	496	96



Cross Sections

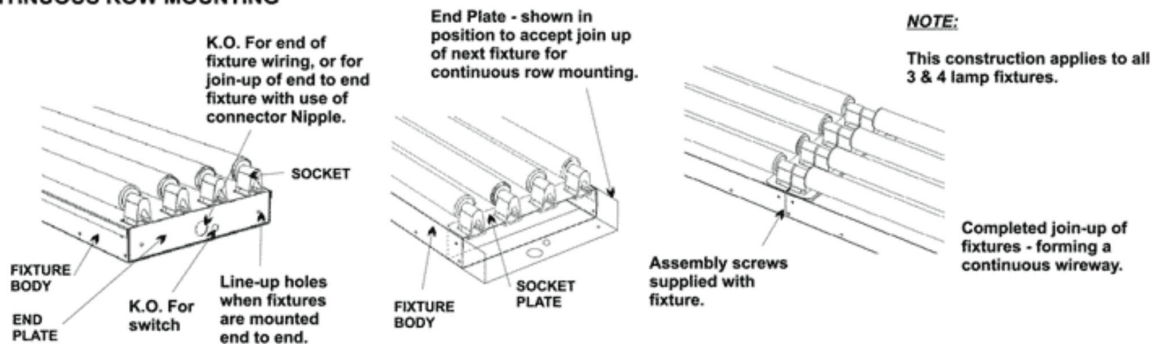
448 RS/SL



6 - 7/32" Ø
MOUNTING HOLES
FOR USE WITH
CHAIN & S - HOOK

496 SL/HO
448/2 RS

METHOD OF ASSEMBLY FOR CONTINUOUS ROW MOUNTING



PRODUCT KEY

COM	4	48	-	T8	32	P	120	-		Options
	No. Of Lamps Typical Number of lamps in Cross Section 4	Nom. Length (in.) 24 36 48 72 96		Lamp Type T8 T8HO T8VHO T12SL T12HO	Lamp Watts See Table below	Ballast Type N - Instant Start P - Prog. Start R - Rapid Start	Voltage 120 - 120V 240 - 240V 277 - 277V 347 - 347V 600 - 600V UNV - 120-277V UN2 - 277-347V UN4 - 347-480V		No. of Lamps Option (in Cross Section) (Blank) - N/A 1L - 1 lamp 2L - 2 lamps 3L - 3 lamps	Ballast Options <input type="checkbox"/> B01 <input type="checkbox"/> B02 <input type="checkbox"/> B03 <input type="checkbox"/> B04 <input type="checkbox"/> B05 <input type="checkbox"/> B06 <input type="checkbox"/> B08 <input type="checkbox"/> B09 Housing Construction Options (select one only) <input type="checkbox"/> C6 Housing 20 Gauge Riveted <input type="checkbox"/> C7 Housing 20 Gauge Welded <input type="checkbox"/> C8 Housing Aluminum Lampholder Options <input type="checkbox"/> H4 Lampholder Rotary Lock Packaging Options (select one only) <input type="checkbox"/> K0 Pack Bulk <input type="checkbox"/> K1 Pack Single Mounting Options <input type="checkbox"/> M23 Mounting Speedy Hanger <input type="checkbox"/> M30 Mounting Suspension Set (speedy hangers with 48-inch chains) Switch Options (select one only) <input type="checkbox"/> S1 Switch Pull-chain <input type="checkbox"/> S5 Switch Toggle <input type="checkbox"/> S6 Switch Turn Fusing and Breaker Options (select one only) <input type="checkbox"/> T5 Fuseholder, In-line Double Pole <input type="checkbox"/> T6 Fuseholder, In-line Single Pole Wiring Options <input type="checkbox"/> V02 Convenience Outlet <input type="checkbox"/> V08 Flexible Feed Cord (single circuit only) Wireguard Options <input type="checkbox"/> W1 Wireguard Heavy Duty Painted <input type="checkbox"/> W2 Wireguard Heavy Zinc Plated Approval and Rating Options <input type="checkbox"/> X6 USA Market
			Tandem (Blank) - N/A /2 - Single Housing /36 - Single Housing Add 36'							

Length	Nominal Lamp Watts			Lamp Length (in)	
	T8	T8HO	T8VHO	T12SL	T12HO
24	17	-	-	-	-
36	25	-	-	-	-
48	32	44	84	-	-
72	-	65	-	72	72
96	59	86	-	96	96